

# Rondo für Querflöte und Klavier

Vivo

Yury Kostyuk

Measures 1-5 of the Rondo. The flute part (top staff) begins with a melodic line marked *legato* and *mf*. The piano accompaniment (middle and bottom staves) features a rhythmic pattern of eighth notes in the right hand and quarter notes in the left hand, also marked *mf*.

Measures 6-9 of the Rondo. The flute part continues with a melodic line. The piano accompaniment maintains the rhythmic pattern from the previous system.

Measures 10-13 of the Rondo. The flute part continues with a melodic line. The piano accompaniment maintains the rhythmic pattern from the previous system.

Measures 14-17 of the Rondo. The flute part continues with a melodic line. The piano accompaniment maintains the rhythmic pattern from the previous system.

18

*p*

18

*p*

22

22

22

26

26

26

29

29

29

32

*f*

3

3

35

3

3

39

3

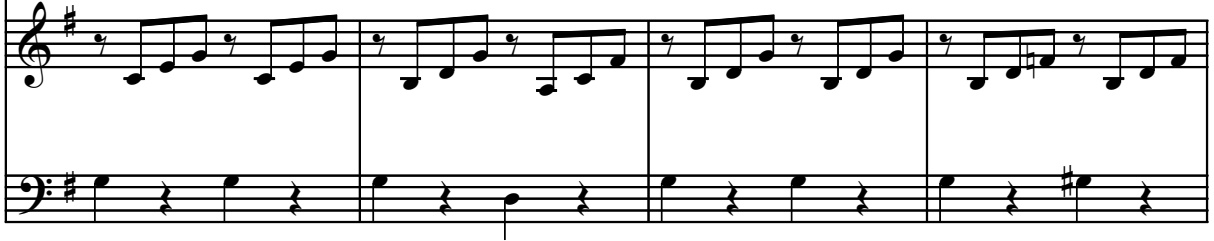
43

3

47



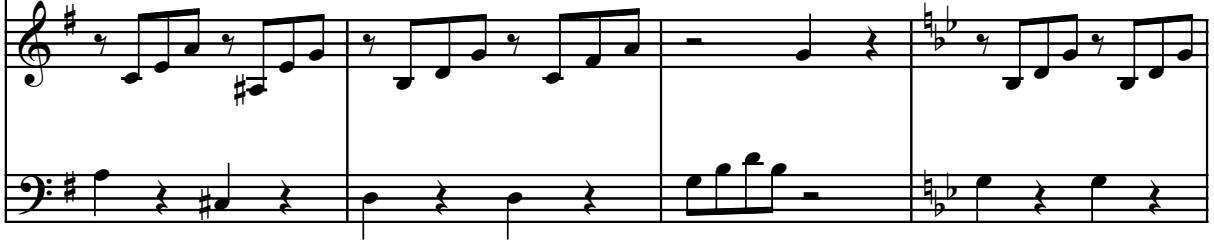
47



51



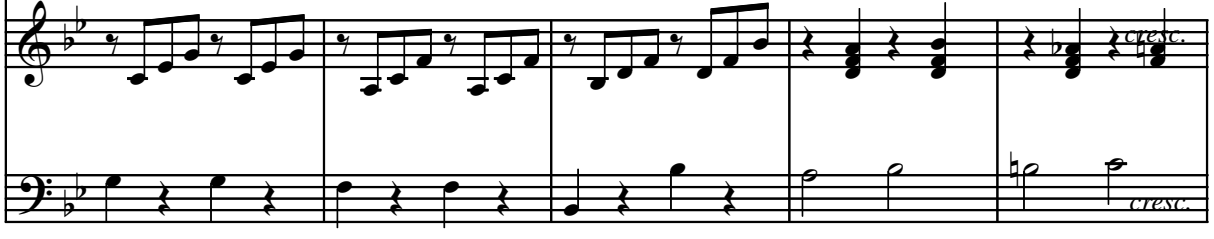
51



55



55



60



60



64

64

68

68

72

72

76

76

79

79

82

*f*

82

85

85

88

88

92

*f*

*f* *p*

96

*mf*

*mf*

99

*mf*

103

*mf*

107

107

111

111

115

115

*f*